

## Vertiface Soundsorb

Create a vibrant space with so many Vertiface® colours to choose from. Durra Panel provides additional acoustic advantages in an incredibly sustainable package, making the Durra Ceiling System a strong contribution towards greener buildings without compromising on quality. Vertiface® panels can achieve NRC 0.85 or just get the look with the 3mm material applied to the Durra Panel face.

**Vertiface is available in the following colours.**



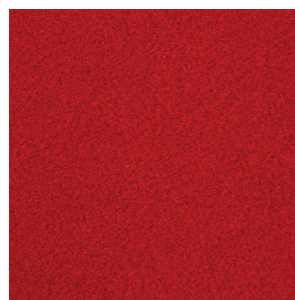
Sargazo



Vintage



Chilli Red



Blazing Red



Beehive



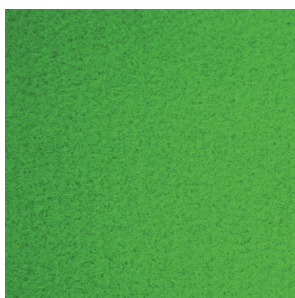
Simba



Senado



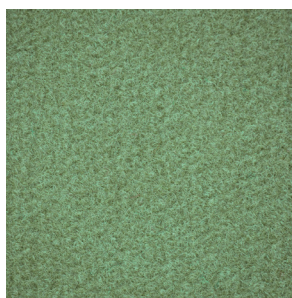
Acros



Granny Smith



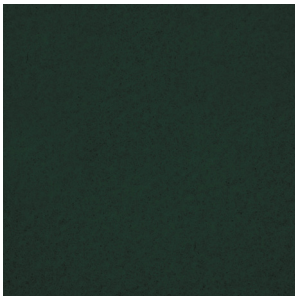
Lime



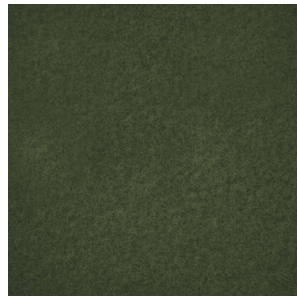
Jade



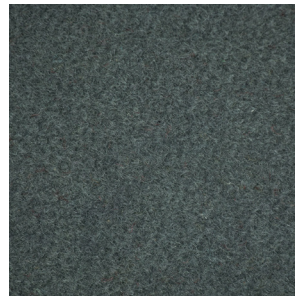
Spearmint



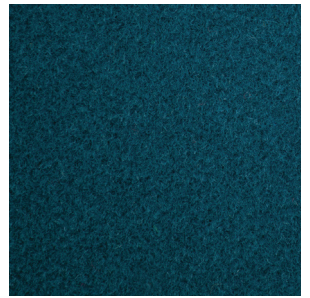
Tree House



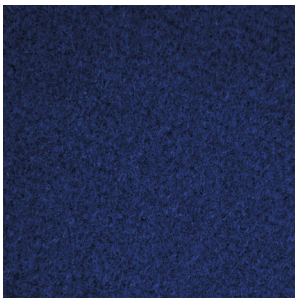
Gherkin



Sage



Octane



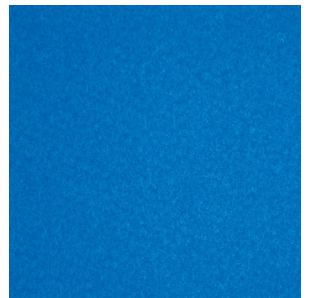
Ink



Muralla



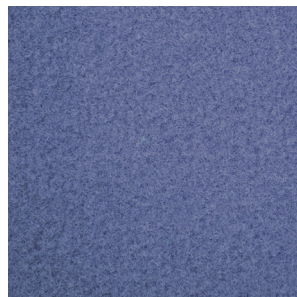
Atlantis



Electric Blue



Porcelain



Calypso



Stonewash



Falling Water



Savoye



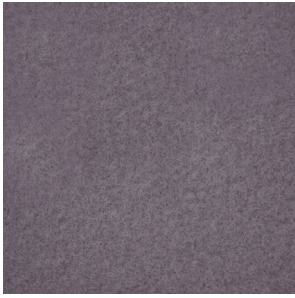
Opera



Parthenon



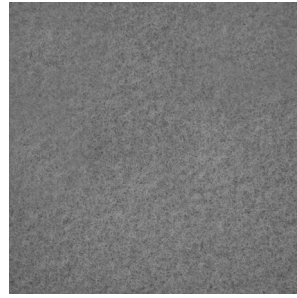
Bark



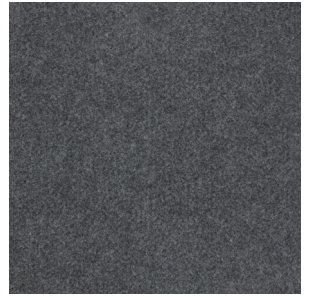
Cavalier



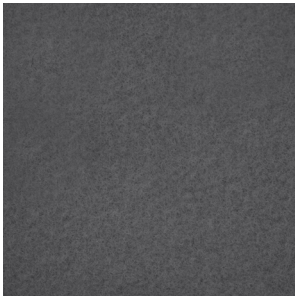
Myst



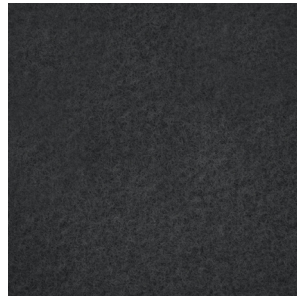
Flatiron



Koala



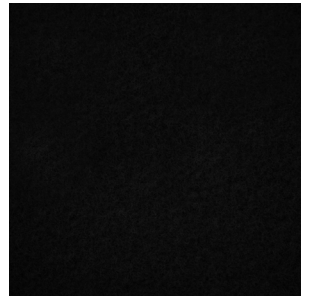
Herald



Empire



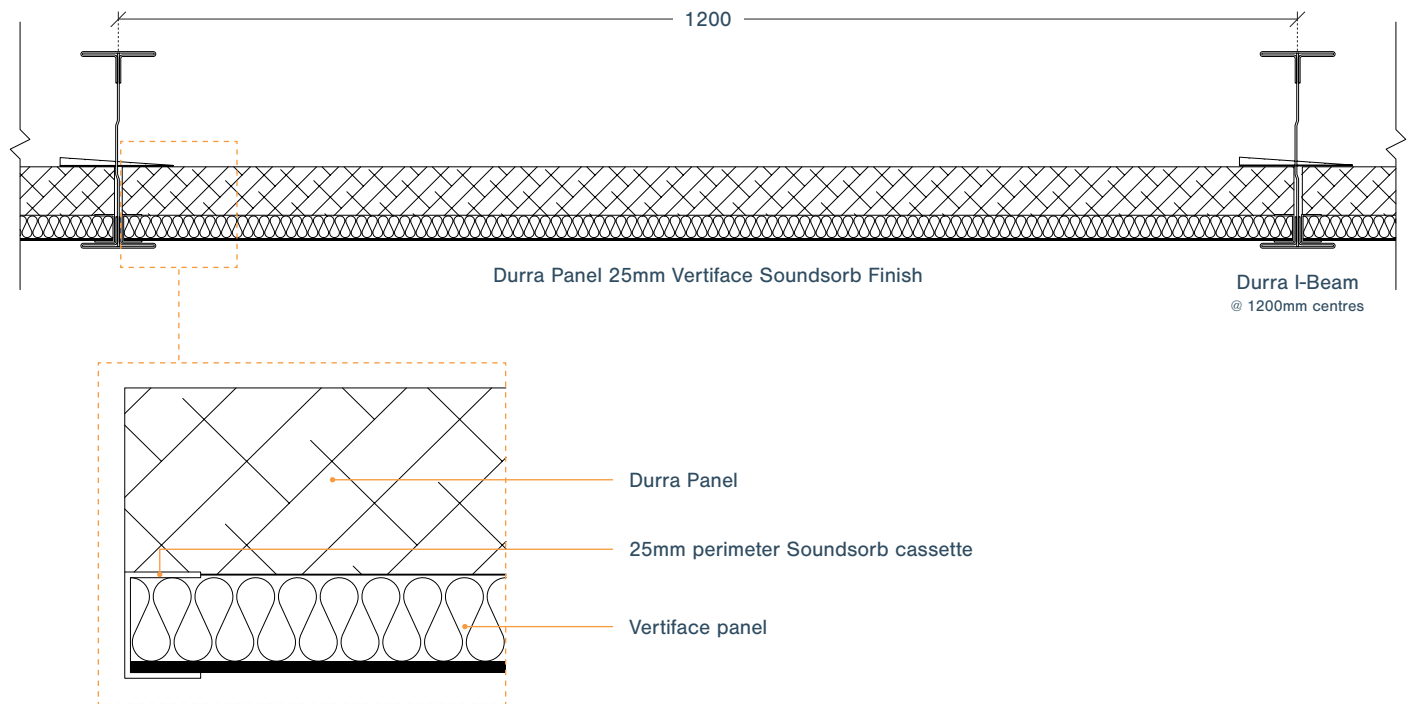
Pinnacle



Petronas

# Typical Detail

## Durra Ceiling System Section



## Reflected Ceiling Plan - typical grid size 2400 x 1200mm

