



Contractors Preparation Guide to Durra Panel

Specification & Ordering

DURRA PANEL®

What Is Durra Panel

Durra Panel is a fully certified wall and ceiling panel that contains an engineered biomass panel core made entirely out of reclaimed wheat straw.

Durra Panel is an extremely environmentally friendly building material that boasts the desired properties of acoustic control and thermal insulation.

A low embodied energy and durability along with a high degree of impact and fire resistance.



Using a process developed in conjunction with the CSIRO, Durra Panel can be used to create simple and safe ceiling and wall systems along with non-load bearing partition walls.

Durra Panel is suitable for use in a range of commercial, industrial and residential applications and can be combined with Durra Steel Sections to create a complete panelised modular system.

Introduction

Ortech Industries uses engineered precision processes to manufacture Durra Panel and Durra Steel Sections in a safe and controlled factory environment in accordance with project supplied specifications and shop drawings. The pre-cut, marked and packaged components are then sent to site ready for safe, no waste installation.

This booklet is to be used as a guide to assist the contractor in ordering Durra Panel and Durra Steel Sections.

Materials can be installed on site by hand as a stick build process or be installed using our ground based assembly system involving modules that are craned into position using Durra Lifting Frame technology.

NOTE: While Ortech Industries will do its best to assist, it is the contractor's responsibility to ensure all items in the Material Specification and Ordering Form Checklists are correct before placing their order. Ortech Industries do not take responsibility for the design and ordering of materials for the project.

Manufacturing Lead Times

Manufacturing lead times commence from receipt of approved company Purchase Order and documentation listed in the Materials and Ordering Forms Checklists. We recommend allowing 4 - 8 weeks for onsite arrival of materials. It is also important to allow adequate time to prepare the items in the Material Specification Checklist to prevent any delays.

Delivery

It is important to provide Ortech Industries with as much detail for delivery as possible.

For example:

- Access for semi-trailers or tautliners
- Specific delivery times or time constraints
- Crane or forklift to unload
- Suitable storage for materials after unloading

NOTE: If your project requires a Soundsorb Cassette finish, these would be delivered to site via tautliners and must be unloaded by fork lift.

Checklists

Material Specification Checklist

Purlin Marking Plan

Panel Marking Plan

Purlin Shop Drawings

Tee Unit Quantities and Types

Durra Panel Cutting List or Shop Drawings (if required)

Durra Steel Angles and Channels (if required)

See pages 6 - 9 for examples.

Ordering Form Checklist

Purchase Order

Packing List (if required)

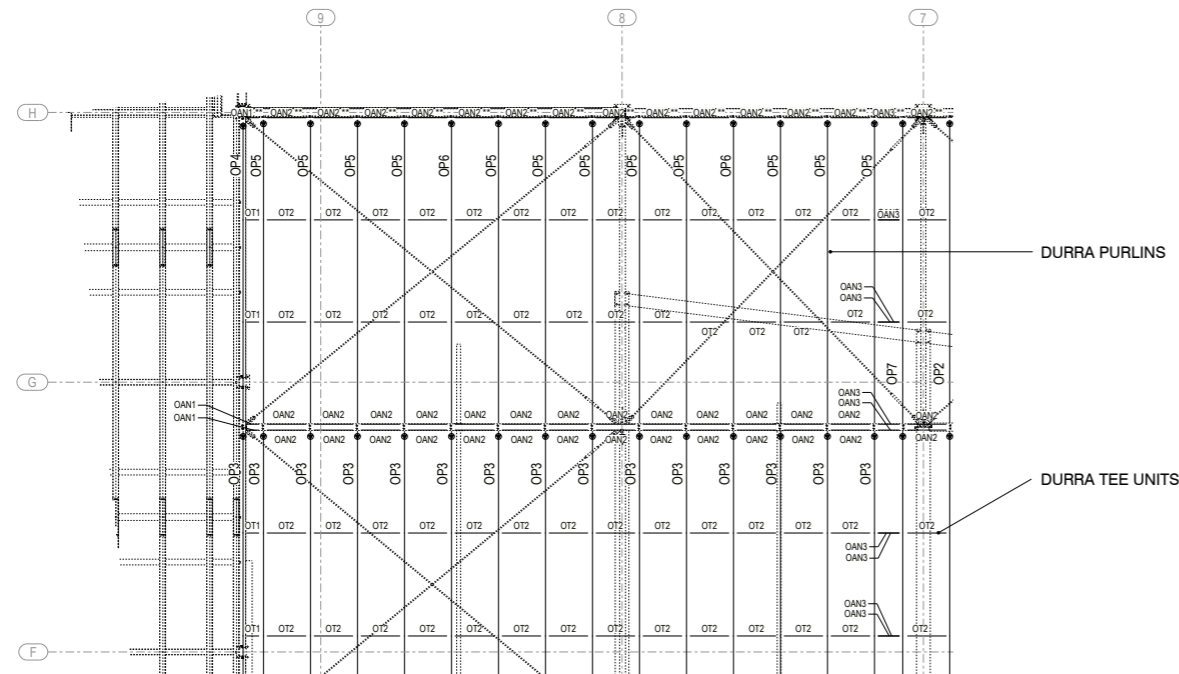
Deliver to Site Instructions Form (see page 10)

Lifting Frame (if required, see Durra Lifting Frame Installation Guide)

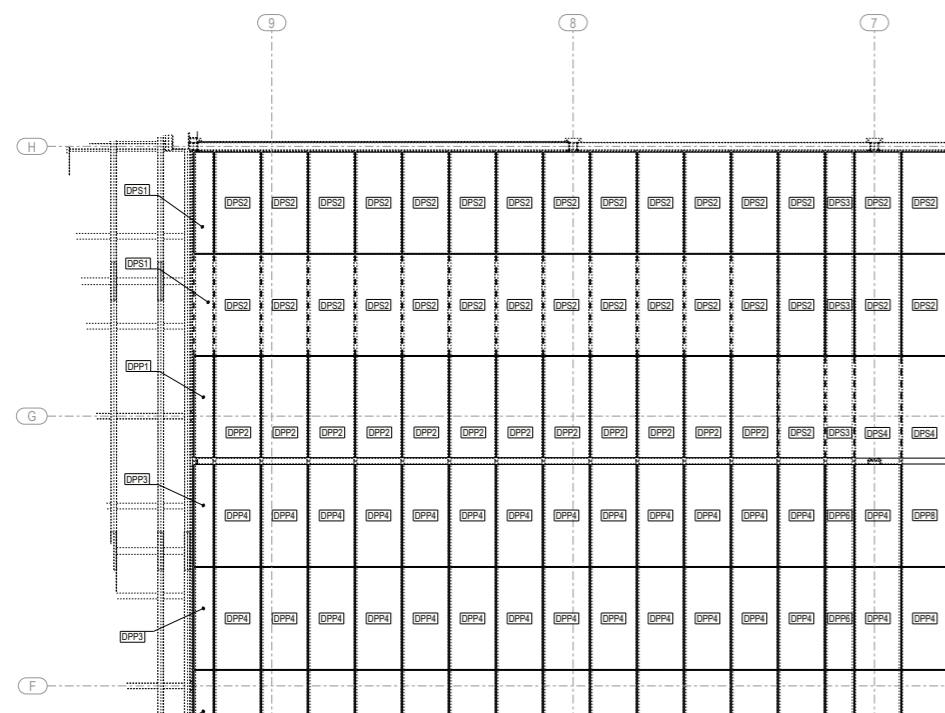
Please ensure you submit all items listed above when ordering. Inadequate documentation may delay the processing of your order.

Material Specification

Purlin Marking Plan Example



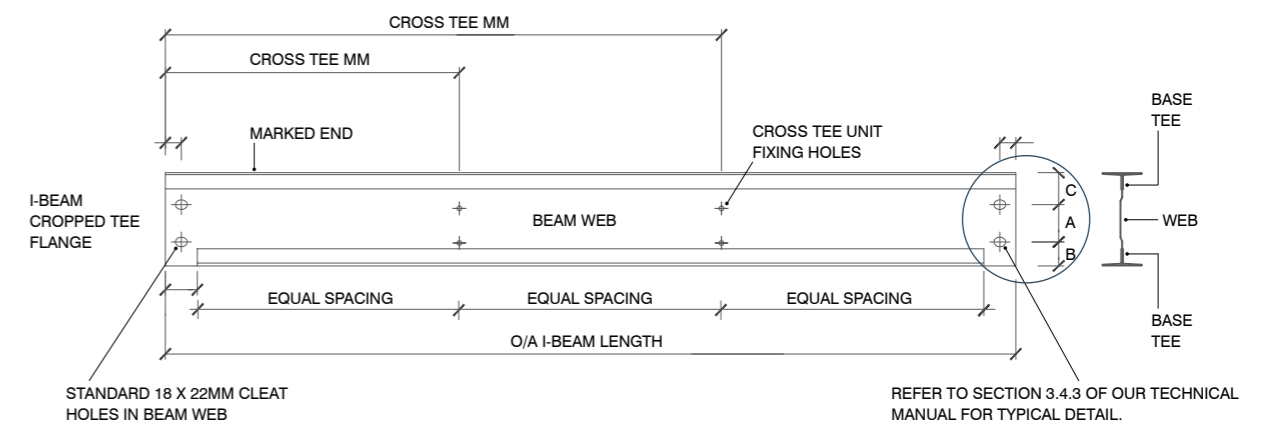
Panel Marking Plan Example



Purlin Shop Drawings

Purlin Shop Drawings must show all required notching, punching and powdercoat finishes if applicable. The Tee Units are to be located at a spacing which allows for equal length Durra Panels to be installed per bay.

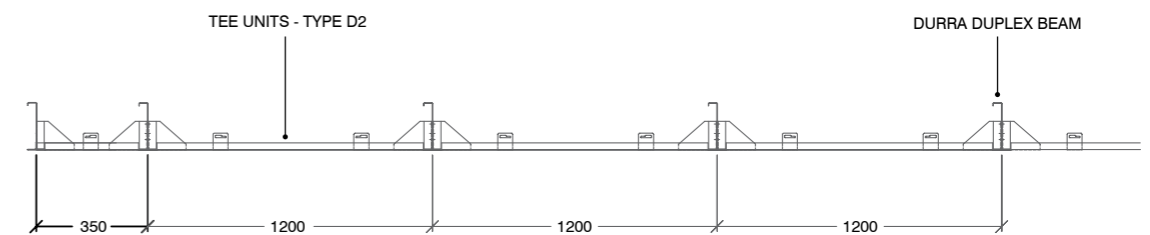
The below drawing is an illustration of our standard beam punchings for Tee Units and cleat holes. Refer to Section 9.3.2 of our Technical Manual for further detail.



Tee Units

Durra Purlins and Wall Girts are typically spaced at 1200mm grid centres. Standard Tee Units are produced to suit a typical 1200mm grid.

In areas where purlin or girt spacing is less than 1200mm the Tee Unit length is determined by the grid spacing from centre line to centre line. Example; Tee Unit to suit 350mm grid.



Durra Tee Units Type D3: Galvanised Finish.
Mark and Pack as listed below.

REF	QTY/GRID
OT1	140/1200
OT2	62/600
OT3	6/350

Example Tee Unit Cutting List.

Material Specification

Durra Panel Cutting List

A document with all Durra Panel Lengths and widths is required, whether it be on a separate cutting list or listed on the Purchase Order.

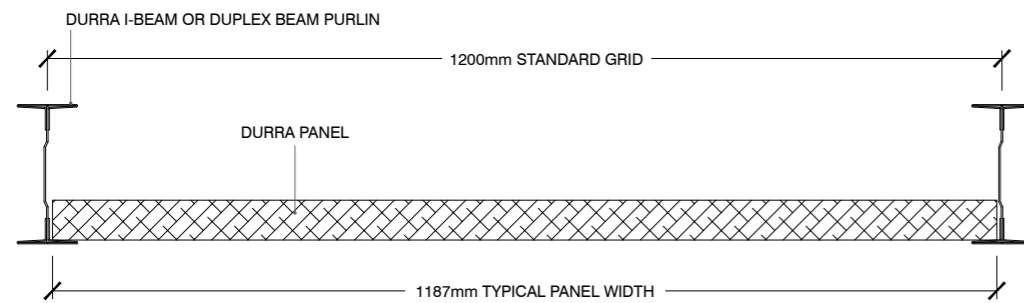
Approved shop drawings are required for Durra Panels with non standard cutting, for example notching, rake cuts and penetrations.

Panel Finishes must be clearly noted on both drawings, cutting list and Purchase Order.

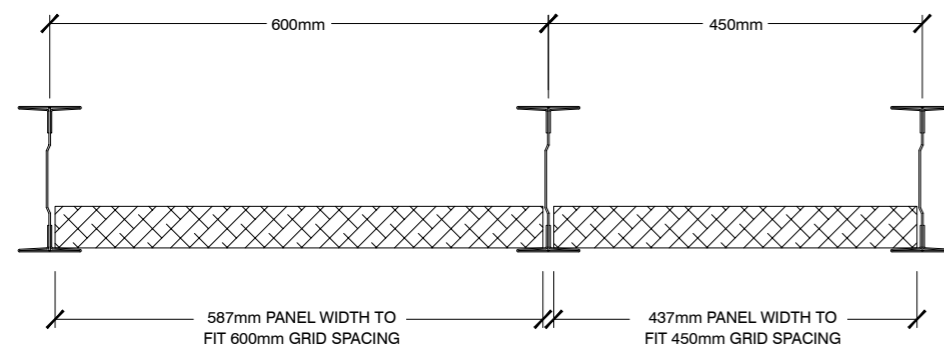
Durra Panel Width

- Durra Panel is extruded in 1187mm width to suit the standard spacing of Durra Purlins or Steel Sections at 1200mm grid centres. i.e. a 13mm tolerance between Durra Beams.
- Where the grid spacing is less than 1200mm grid, the same 13mm width tolerance is required. i.e. a 587mm Durra Panel to fit a 600mm grid spacing.

Standard 1200mm Grid

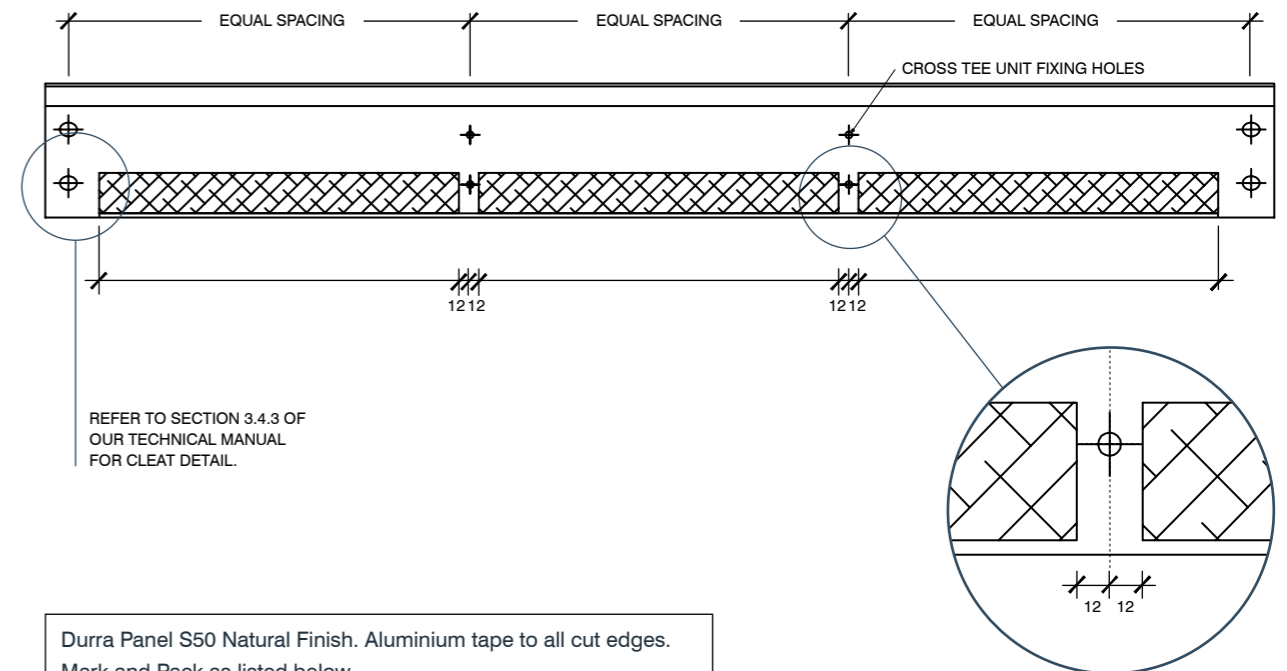


Non Standard Grid



Durra Panel Length

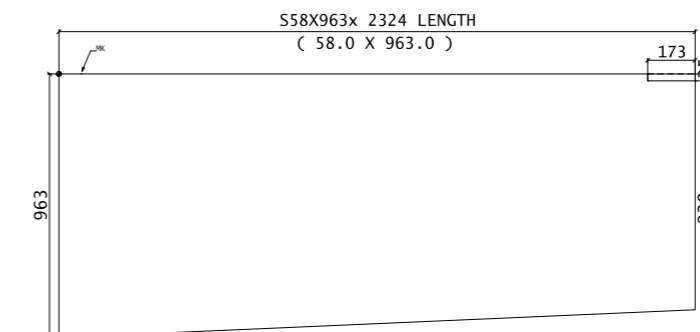
- Durra Panel must have 25mm perimeter support. This support is typically provided by Durra Beams and Durra Tee Units.
- The Length of Durra Panel is determined by the centre line spacing of the Tee Unit Bridging less a tolerance of 24mm.
- Refer to Section 1.3.5 of our Technical Manual for further detail on maximum available lengths of Durra Panel.
- Panel Shop Drawings (eg below) will be required for any raked cuts or custom notchings.



Durra Panel S50 Natural Finish. Aluminium tape to all cut edges. Mark and Pack as listed below.

REF	QTY/GRID
DPP1	110/2582 X 1187
DPP2	72/587 X 1187
DPP3	6/437 X 1187

Example Panel Cutting List.



Example Rake Cut Drawing.

DURRA PANEL[®]



www.durrapanel.com

Ortech Industries Pty Ltd

Unit 3, 490 Frankston-Dandenong Road
Carrum Downs VIC 3201 Australia

hello@durrapanel.com

+61 3 9580 7766

 EPD[®]
AUSTRALASIA
ENVIRONMENTAL PRODUCT DECLARATION

 Declare.